

PacketiX VPN 2.0

PacketiX VPN 2.0 is the next generation VPN communication software developed by SoftEther Corporation, that offers stability, flexibility and expandability.



Easy to install and manage

Download and double-click the Installer

Even non-specialist users can install and manage a VPN with the easy GUI Server Manager.

Stability and security

High Security

PacketiX VPN supports the encryption of communication packets, server authentication, user authentication using password or hardware token, and a variety of other security functions.

Flexibility

Easy access from any place or application

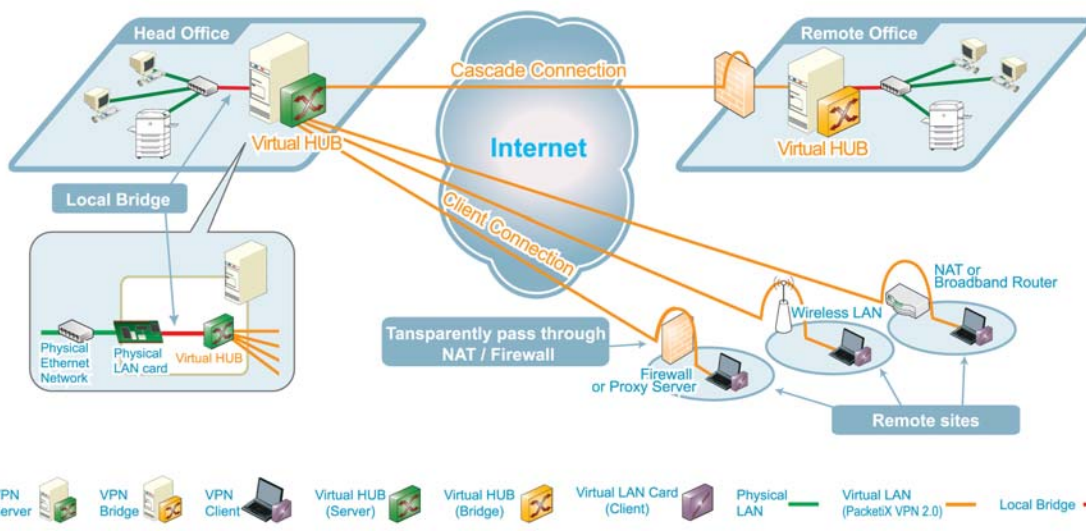
A PacketiX VPN can be easily accessed from remote locations, such as a WLAN hotspot, through almost all types of NAT, proxy servers and firewalls. Unlike SSL-VPN, users are not limited to their web browser and can use application or protocol, and unlike IPsec even protocols other than TCP/IP.

Connect remote bases to one network

PacketiX VPN virtualizes a Layer 2 network (Hubs and NIC). The established VPN is integrated into one network, so users can communicate on the same range of IP addresses.

Connection scheme

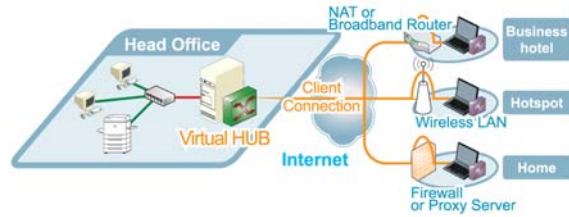
As illustrated below, all the nodes are connected with the same network.



Usage Example

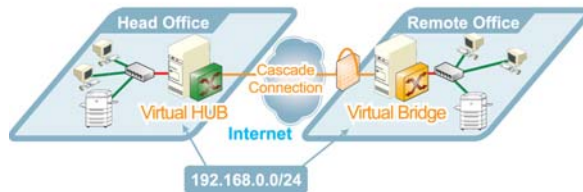
Access to in-house LAN from remote site

Users can access the PacketiX VPN from anywhere at any time (from home, wireless LAN hotspots, or hotels).



Combine two sites into an integrated network

If you want to connect two sites with an old-style VPN, you have to change firewall and routing settings on each site. When you use PacketiX VPN, you can connect sites without changing the routing settings. After the VPN is set up, you can access all PCs and devices on the network regardless of which site they are at.



PacketiX BOX (Appliance Server)

Most suitable as VPN Bridge for a remote site or integrated VPN Server for small and home offices.

- > Optimized OS
- > Easy-to-Understand GUI and Manual
- > High Durability
- > Compact Size
- > High Interoperability
- > Reduced burden on administrators
- > Centralized maintenance of related hardware and Software



Comparison to other VPN Solutions

	Wide Area Ethernet	Internet VPN
Infrastructure	Leased line	Internet
Line cost	Expensive	Inexpensive
Data transfer layer	L2	See below
Connection form	Only between two sites	See below
Network segment	Identical or separate	See below

VPN product type		PPTP	IPsec-VPN	SSL-VPN	L2-VPN (PacketiX VPN)
Tunneling	Tunneling Protocol	PPP over GRE	ISAKMP / ESP	SSLv3 (TCP) https Compatible	SSLv3 (TCP) https compatible
	Influenced by network environment	NAT / Firewall / Proxy etc.	NAT / Firewall / Proxy etc.	No	No
	Connectivity	No	No	Yes	Yes
Data transfer	ncapsulated layer	L3	L3	L5	L2 / L3
	Data transfer protocol	TCP, UDP etc.	TCP, UDP etc.	http, FTP etc.	IPv4, IPv6, IPX/SPX etc.
	Usable from any application	Yes	Yes	No	Yes
Network	Connect whole LANs	Possible	Possible	Impossible	Possible
	Network segment	Separate	Separate	n/a	Identical or separate
	Flexibility	Partial	Partial	No	Yes

Case Study

Secure and convenient access to the intranet with PacketiX VPN

Yomiuri Telecasting Corporation
<http://www.ytv.co.jp/>

Yomiuri Telecasting Corporation is a TV broadcaster in Osaka. For its news program, the station has overseas correspondents who gather news from all over the world. To

allow its reporters easy access to the company intranet for sending in their manuscripts, Yomiuri TV introduced the software PacketiX VPN.

Reasons for choosing PacketiX

Yomiuri TV's reporters are located in many places around the globe, using different means to access the internet, such as public PCs, LANs at overseas offices and mobile devices for direct on-site reports.

For receiving manuscripts, a server was set up within the company intranet.

At first, reporters used dial up connections over the mobile phone network, but this proved to be impractical for large data files such as photos and videos, and caused high phone bills. Considering cost and flexibility, it was a natural choice to establish a VPN using PacketiX VPN.

Mr. Sekioka, the system administrator, also has previous experiences with older solutions:

"So far, it didn't work well. You could connect from the Internet, but from within the company it was not accessible. Mostly, the troublemaker were router settings and blocked VPN ports."

PacketiX, with its ability to easily overcome routers, NAT and firewalls, offered a solution to this problem. It also proved to be easy to install, use and administrate.

As a user new to the system stated,

"We are now able to check the aired programs that use our material on the intranet. Before, since we cannot receive Japanese television in many overseas offices, we didn't know how the drafts and materials were put into a story until we came home to Japan."

PC remote administration

Another advantage of choosing PacketiX VPN is remote administration, with the PacketiX Desktop VPN software. If a PC problem occurs in the field, the administrator has the

option to remotely log into the PC and fix it.



Mr. Sekioka,
Information System Administrator

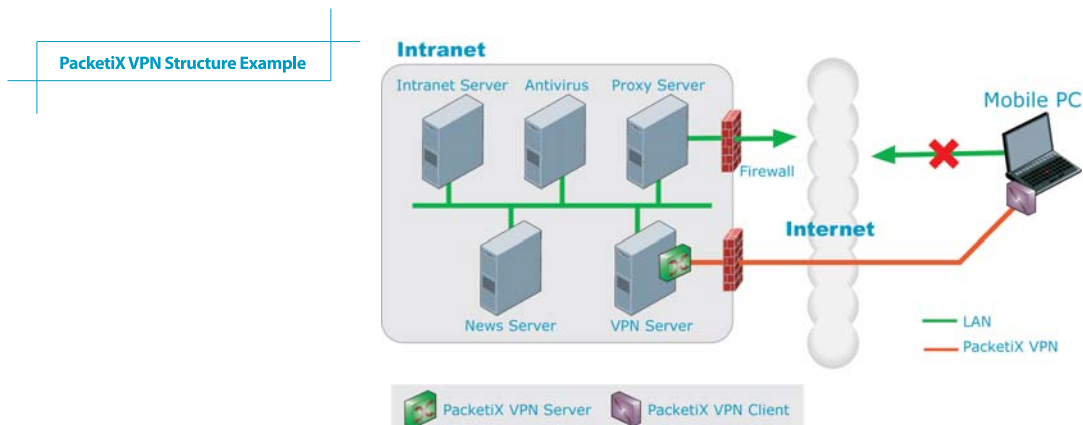
Security Policy

At Yomiuri TV, security is implemented on the level of software, hardware and the individual user.

With PacketiX VPN, there were no concerns on the technical side, due the option to select the right encryption with SSL to meet the needs of the application.

personal firewall were installed. Fingerprint authentication hardware on the laptops was integrated with PacketiX VPN, which offered central management of the user data. File encryption on the PCs protected data locally. Before handing out the PCs, a fingerprint is taken and instructions are given. This way, an increased security awareness is communicated to the staff.

On the journalists' laptops, anti-virus software and a



Prices

PacketiX VPN 2.0 Server Standard Edition
+ 3 Client Connect Licenses + Support Pack (1 year)



Special Price

\$499.00

PacketiX VPN 2.0 Server Standard Edition
+ 5 Client Connect Licenses + Support Pack (1 year)



\$975.00

PacketiX VPN 2.0 Server Standard Edition
+ 10 Client Connect Licenses + Support Pack (1 year)



\$1,299.00

PacketiX VPN 2.0 Server Standard Edition
+ Bridge Connect License + Support Pack (1 year)



\$1,712.00

For other offers, contact below.

The Support Pack includes technical support (email support + web site), option pack (update program for additional functions), administration pack (administration functions and update program for Enterprise Edition users).

Supported OSes

Windows

Vista: Home Basic/ Premium, Business, Enterprise, Ultimate

XP: Professional, Home Edition, Tablet PC Edition, Media Center Edition

Server 2003: Standard Edition, Enterprise Edition

2000: Professional, Server, Advanced Server

Linux

Red Hat Linux AS/ES 4

Turbolinux 10 Server



Plat'Home is approved as "First Partner" of SoftEther Corp.

The prices, specifications and overviews given in this leaflet can be changed without prior notice. Please contact us for the newest information.



Phone 408-351-3342

Fax 408-351-3355

Email sales@plathome.com

Contact to: Plat'Home USA Ltd. 111 N Market St San Jose, CA 95113, USA